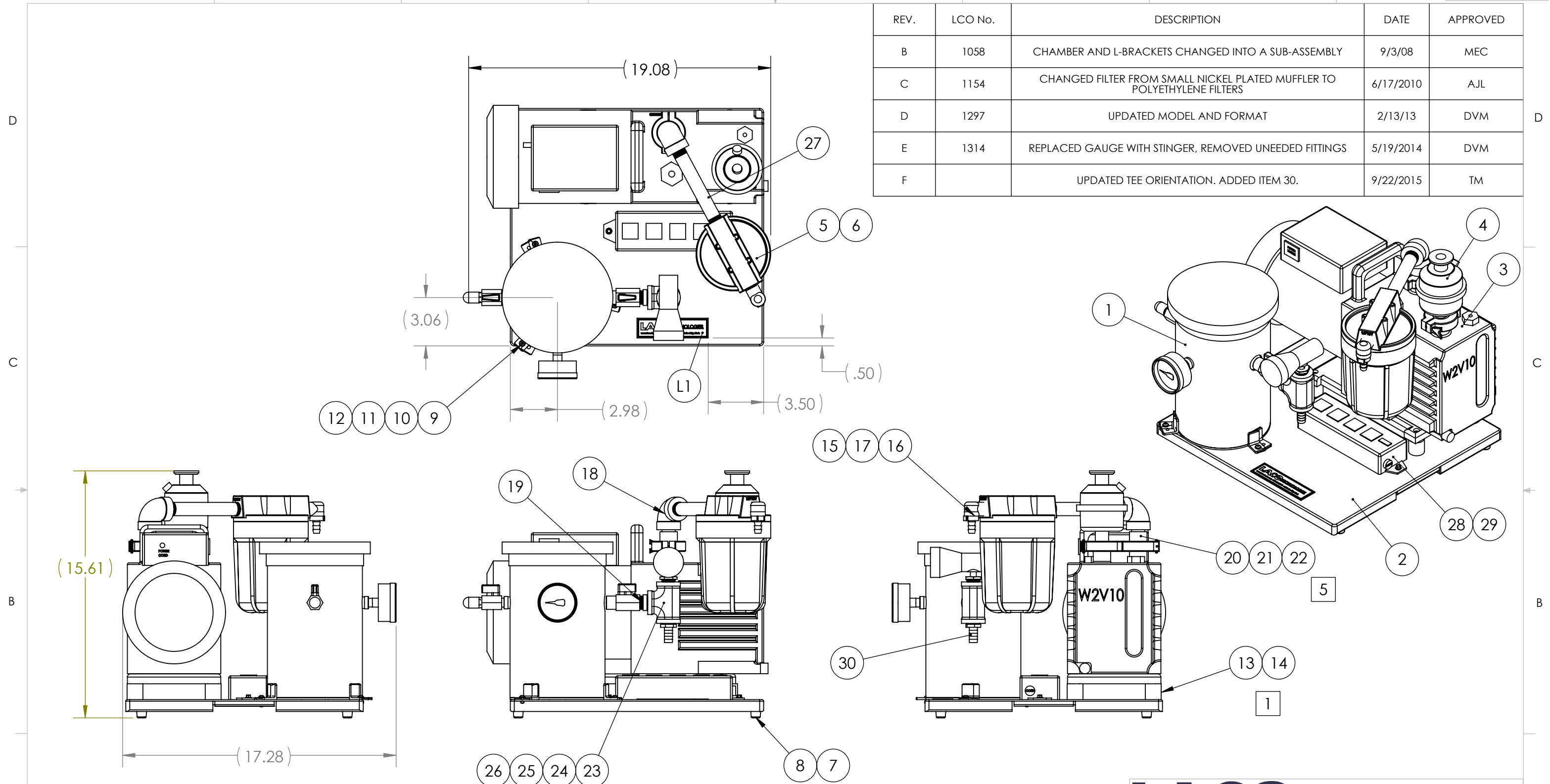


REV.	LCO No.	DESCRIPTION	DATE	APPROVED
B	1058	CHAMBER AND L-BRACKETS CHANGED INTO A SUB-ASSEMBLY	9/3/08	MEC
C	1154	CHANGED FILTER FROM SMALL NICKEL PLATED MUFFLER TO POLYETHYLENE FILTERS	6/17/2010	AJL
D	1297	UPDATED MODEL AND FORMAT	2/13/13	DVM
E	1314	REPLACED GAUGE WITH STINGER, REMOVED UNEEDED FITTINGS	5/19/2014	DVM
F		UPDATED TEE ORIENTATION. ADDED ITEM 30.	9/22/2015	TM



- NOTES:
- FOR HOLE LOCATIONS ON PUMP, REMOVE RUBBER MOUNTS FROM PUMP, SCREW BOM REF # 13, #14, UP INTO THE PUMP THORUGH BASE, BE SHURE TO REUSE THE NUT AND WASHER FROM THE PUMP MOUNTS.
 - SEE ABAS PN VDS06093H FOR BOM.
 - BOM REFERENCE #20 & #26 WILL CONNECT THE TWO 3/8 BARB FITTING ADAPTERS.
 - SEE MFG-01-1004 FOR LEAK RATE (INDUSTRIAL CHAMBER), CLEANING, AND HANDLING PROCEDURE.
 - LEAK TEST PER MFG-01-1008. INSTALL LEAK DETECTOR TEST HOSE AT PUMP INLET TO LEAK TEST ENTIRE ASSEMBLY.
 - WHEN COMPLETE, STORE CHAMBER ONLY UNDER VACUUM.

LACO TECHNOLOGIES

UNLESS OTHERWISE SPECIFIED:
 DIMENSIONS ARE IN INCHES.
 TOLERANCES:
 FRACTIONAL: ±1/16"
 ANGULAR: MACH ±1° / BEND ±2°
 TWO PLACE DECIMAL: ±.01
 THREE PLACE DECIMAL: ±.005
 GEOMETRIC TOLERANCING PER ASME Y14.5M - 2009

PROPRIETARY AND CONFIDENTIAL
 THE INFORMATION CONTAINED IN THIS DRAWING IS THE SOLE PROPERTY OF LACO TECHNOLOGIES, INC. ANY REPRODUCTION IN PART OR AS A WHOLE WITHOUT THE WRITTEN PERMISSION OF LACO TECHNOLOGIES, INC., IS PROHIBITED.

TABLE TOP VACUUM DEGAS SYSTEM 6" X 9" HV

DRAWN BY	DVM	DATE	10/19/2018
APPROVED BY	MEC	DATE	12/11/07
DWG. NO.	92100		REV
SCALE: 1:8	SIZE: B	F	
		SHEET 1 OF 1	