

LCF REFRIGERANT COLD FINGER

Protect your sensitive equipment from contaminants during High Vacuum ($<10^{-4}$ Torr) with a refrigerant-based Cold Finger. With simple integration via ISO160 port, the Refrigerant Cold Finger captures outgassed materials and water vapor to ensure safe, clean, and efficient operation of your vacuum system.

FEATURES

- Brooks/Edwards Polycold® PCC high-performance cooling compressor, air cooled
- Cold end with ISO 160 mounting
- Cooling to -203°C (70 K)
- Two braided SS 5ft refrigerant lines



BENEFITS

- External cryochiller eliminates the need for LN2
- Can be removed for cleaning
- Extend reliability and life of system components
- Traps volatile contaminants in the vacuum chamber
- Improve pumpdown times and vacuum performance

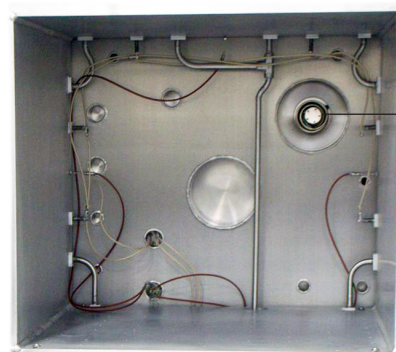
COLD FINGER SPECIFICATIONS

COMPONENT	DESCRIPTION
PART NUMBER	LCF-PCC-ISO160
MOUNTING METHOD	ISO 160
COMPRESSOR DIMENSIONS	17.75" L x 11.06" W x 14.75" H
COMPRESSOR WEIGHT	68.5 lbs.
COLD END DIMENSIONS	ISO 160 x 5.7" L into chamber
COLD END WEIGHT	3.2 lbs.
COOLING METHOD	PT-30 Refrigerant
VACUUM RATING	$<1 \times 10^{-4}$ Torr
HELIUM LEAK TESTED	$<1 \times 10^{-8}$ ATM-CC/sec
FINISH	Nickel Plated or Mylar Wrapped
INLET/OUTLET	2 braided SS 5ft lines
POWER REQUIREMENT	Single Phase 120 or 220V, 60Hz at 500 watts
AGENCY APPROVALS	CE, NRTL, SEMI S2, SEMI F47

External view of Cold Finger vacuum system integration



Internal view of Cold Finger vacuum system integration.



MORE INFO