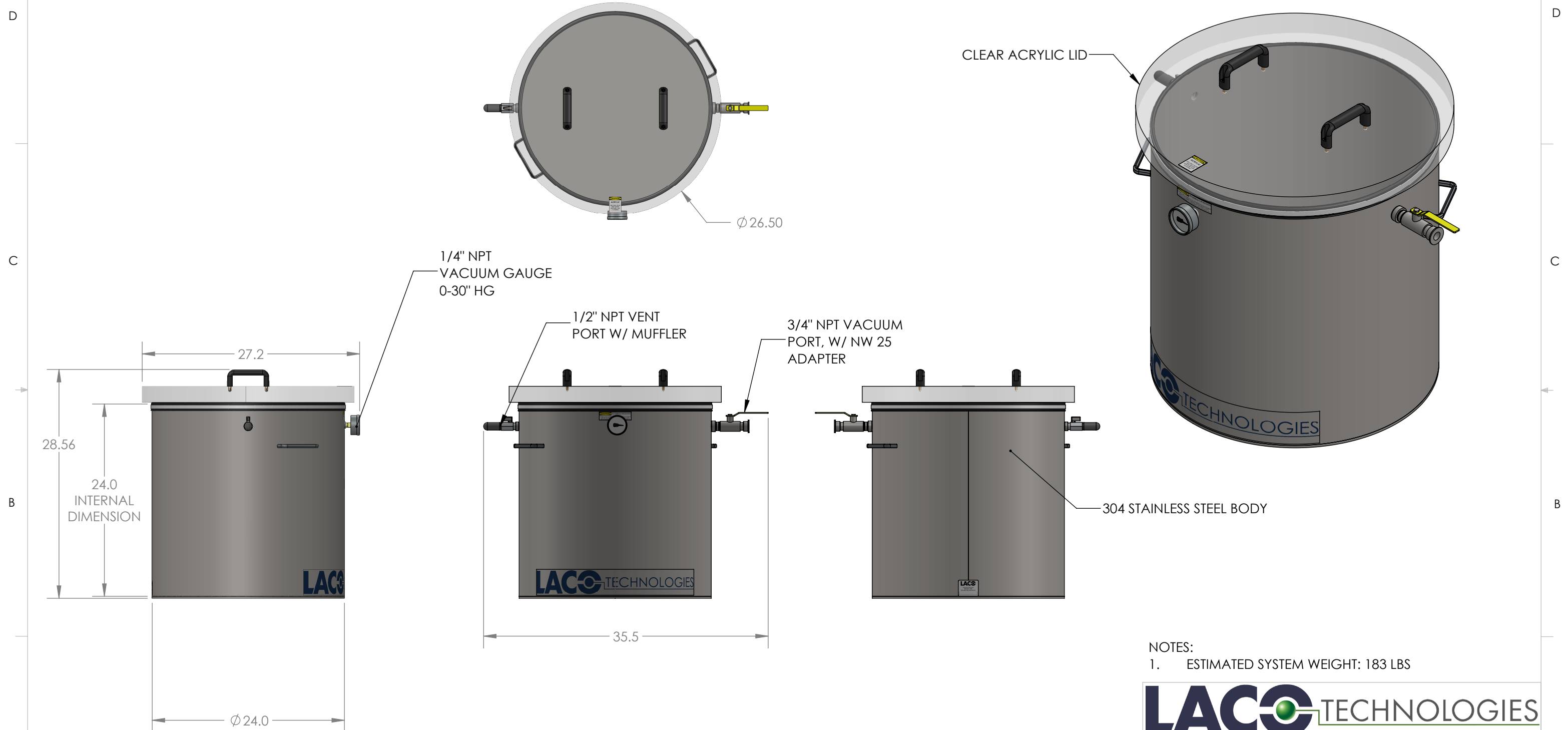


REV.	LCO No.	DESCRIPTION	DATE	APPROVED
A	1253	INITIAL RELEASE	6/1/18	MLC



NOTES:
 1. ESTIMATED SYSTEM WEIGHT: 183 LBS



UNLESS OTHERWISE SPECIFIED:
 DIMENSIONS ARE IN INCHES.
 TOLERANCES:
 FRACTIONAL: $\pm 1/16"$
 ANGULAR: MACH $\pm 1^\circ$ / BEND $\pm 2^\circ$
 ONE PLACE DECIMAL: $\pm .05$
 TWO PLACE DECIMAL: $\pm .01$
 THREE PLACE DECIMAL: $\pm .005$
 GEO TOLERANCING: ASME Y14.5M - 2009

PROPRIETARY AND CONFIDENTIAL
 THE INFORMATION CONTAINED IN THIS DRAWING IS THE SOLE PROPERTY OF LACO TECHNOLOGIES, INC. ANY REPRODUCTION IN PART OR AS A WHOLE WITHOUT THE WRITTEN PERMISSION OF LACO TECHNOLOGIES, INC., IS PROHIBITED.

TOP LEVEL ASSEMBLY LVC2424-3111-VI		
DRAWN BY	NAME	DATE
SEE ABAS FOR APPROVER	MLC	6/1/18
DWG. NO.	REV	
113654-C	A	
SCALE: 1:2	SIZE: B	SHEET 1 OF 1